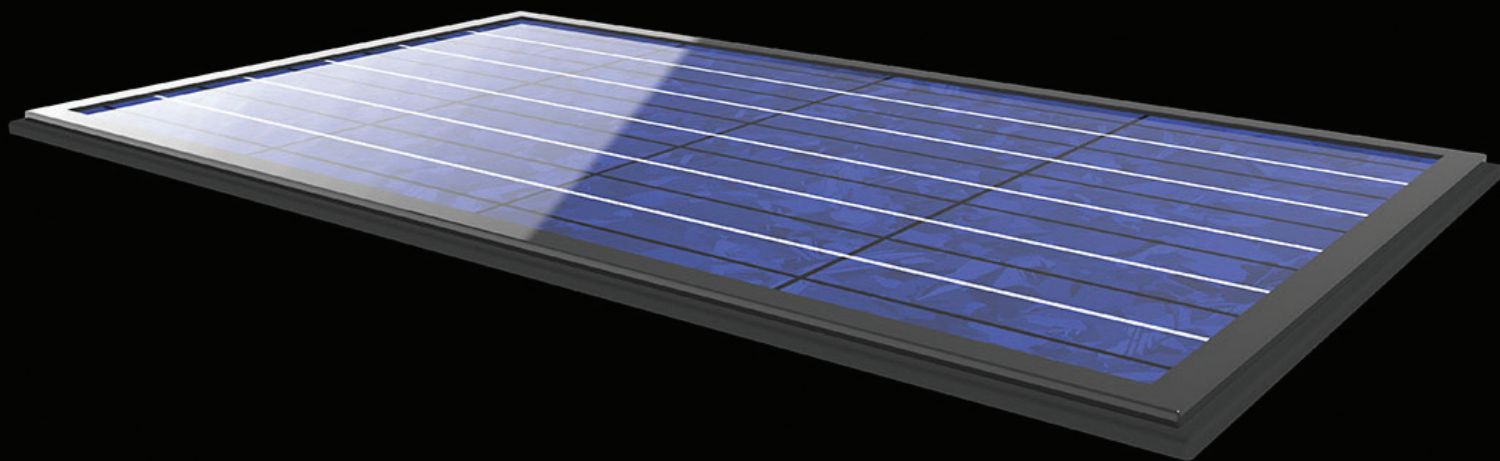


# Introducing the solar roof tile that just makes sense.



The Star 8 Solar Tile takes the best of Australian traditional roof tile design and combines it with the latest solar technology. Star 8 Solar Tiles provide the homeowner with a fully integrated solar solution, removing the need for a retrofitted 'bolt on' system which has the potential to damage the existing roof. Star 8 Solar Tiles combine high efficiency Solar Photovoltaic modules and traditional roofing tiles, creating an integrated, functional solar roof tile. Star 8 solar tiles are fully compatible with the majority of Australian tiled roof so retrofitting the solar tiles to your roof has just become an attractive option.

Increased efficiencies allow a 5KW system to replace approximately 340 standard roof tiles which is around 10% of the average roof space. And if you want to produce more power, just install more tiles.

The Star 8 roof tile range includes mono-crystalline, poly-crystalline and thin film technology, enabling even the shady roofs to produce power – direct sunlight is no longer an essential requirement.

As we say....it just makes sense!!!



**Star8 Australia Pty Ltd**

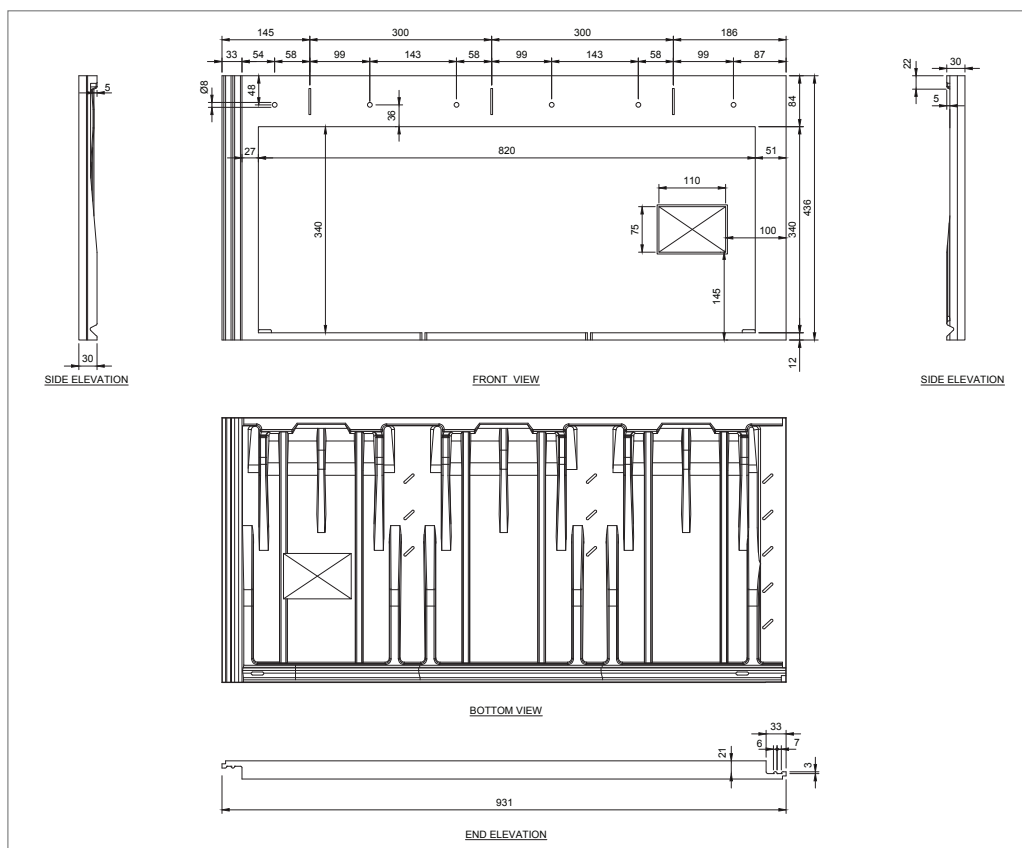
Suite 3, 1027 Manly Road, Tingalpa, QLD 4173

Mobile+ 61 416 029160 (GMT + 9) Email [info@star8australia.com.au](mailto:info@star8australia.com.au) Website [www.star8australia.com.au](http://www.star8australia.com.au)

# ELECTRICAL TABLE

Details	Information
Maximum Power	40 Watts
Power Tolerance	+/- 3%
Vmp (V)	5.11V
Imp (A)	7.83A
Voc (V)	6.39A
Cell Efficiency	17.6%
Series Fuse Rating	16A
Number of Cells	10 (2 x 5)
Module Operating	-40oC to 80oC
Junction Box	IP65
Solar Panel Weight	2.7 kg
Total Weight	10.2 kg
Solar Panel Dimensions	815mm x 335mm x 25mm
Tile Dimensions	931 x 436 x 30mm

Product Details	
Date	July 2016
Range name	Solar 8 Solar Tile - Model 40.C1
Typical Properties	
Length (mm)	931mm
Width (mm)	436mm
Height (mm)	30mm
Average Weight/Unit ( Tile Frame Only )	7.5 kg
Average Weight/Unit ( Tile + Solar Cell )	10.2 kg
Units per square metre	3.08
Average Weight per sq m ( inc. Solar Cells )	31.46 kg
Head Lap	75 mm
Minimun Pitch	20°
Maximun Pitch	35°
Bonding Method	Cross Bond



All dimensions in mm



Star8 Australia Pty Ltd

Suite 3, 1027 Manly Road, Tingalpa, QLD 4173

Mobile+ 61 416 029160 (GMT + 9) Email [info@star8australia.com.au](mailto:info@star8australia.com.au) Website [www.star8australia.com.au](http://www.star8australia.com.au)